

## 2014 Aluminium opening systems

### Part 1 – General

#### 1.01 Summary

- A. Section includes:
  - 1. Aluminum Doors and Frames

#### 1.02 References

- A. American Architectural Manufacturers Association (AAMA)
- B. American Society for Testing and Materials (ASTM)
- C. Aluminum Association (AA)
- D. National Fenestration Rating Council (NFRC)

#### 1.03 System Description

- A. General: In addition to requirements shown or specified, comply with:
  - 1. Applicable provisions of AAMA Aluminum Storefront and Entrance Manual for design, materials, fabrication and installation of component parts.
- B. Design Requirements: Ultra Series Narrow Stile Entrance is a single source package of door, doorframe and hardware that is engineered for moderate traffic.
- C. Performance Requirements: Each assembly tested by a recognized testing laboratory or agency in accordance with specified test methods.
  - 1. Tested by the dual moment corner joint strength test.

#### 1.04 Quality Assurance

- A. Single Source Responsibility:
  - 1. Obtain entrances, storefronts, ribbon walls, window walls, curtain walls, window systems, and finish through one source from a single manufacturer.
- B. Provide test reports from AAMA accredited laboratories certifying the performances as specified in 1.03.

#### 1.05 Warranty

- A. Products warranted against failure and/or deterioration of metals due to manufacturing process for a period of two (2) years.

### Part 2 – Products

#### 2.01 Product

- A. Acceptable Products:
  - 1. Ultra Opening Series, Narrow Stile Door 1-3/4".
    - a. Vertical Stiles: 2.78 inches.
    - b. Top Rail: 2 inches.
    - c. Bottom Rail: 4 inches or 10 inches.
    - d. Glazing Stops: Squared snap-in type for 1/4 or 1 inch glass (single or double).
  - 2. Major portions of the door stiles a nominal .098 inches.

#### 2.02 Materials and Accessories

- A. Door members: Extruded 6063-T6 or 6060-T5 aluminum alloy (ASTM B221-Alloy G.S. 10a T6).
- B. Screws, fastening devices, and internal components: Aluminum, stainless steel, or zinc plated steel in accordance with ASTM A-164. Shall be aluminum or steel, providing the steel is properly isolated from aluminum.
- C. Glazing Gasket (compression-type design).

#### 2.03 Hardware

- A. Hardware furnished and installed by the door manufacturer, and include the following standard hardware (as selected).
  - 1. Weatherstripping: Hard-backed poly pile in door and/or frame. Meeting stile of all pair of doors have a double line hard-backed poly-pile astragal.
  - 2. Threshold: Extruded Aluminum with ribbed surface.
  - 3. Sill Sweeps: Brush strip (exposed, concealed).

4. Pivoting/Hinging: (Center, offset pivot; butt, continuous.)
5. Closers: (Overhead concealed, surface, floor.)
6. Latches/Strike: (Dead-latch combination, two-point.)
7. Latch Handle: (Lever, eurostyle/ w/return, paddle.)
8. Electric Release: (Offset strike, center hung strike.)
9. Locks/Strike: (Maximum security hooklock, deadbolt.)
10. Auxiliary Locks: (Two-point, three-point, flushbolts.)
11. Cylinders: (Mortise, rim, dummy, thumbturn.)
12. Panic Devices: (Cross, touch bar, flush mid panel.)
13. Push/Pulls: (Standard, offset radius, straight radius.)
14. Cylinder Guard: (Security ring/retainer ring.)
15. Exit Indicator: (Message panel.)
16. Transom Decal: (This door to remain . . .)
17. Door Stop/Holder:
18. Mail slot.

SPECIFIER NOTE: Refer to Aluminum Architectural Manual, Hardware Section for description of items.

#### 2.01 Finish

- A. Finish all exposed areas of aluminum and components as indicated.
  1. Powder coating
    - a. Architectural Class I
      - (a) Color powder coating confirming with AAMA2603 and 1 year Florida specifications.
      - (b) Powder Coating finish shall be chosen from finish guide.
      - (c) Finishes: Gloss / Satin / Matt / Texture
      - (d) Product application is recommended for use in normal weathering environments or internal applications.
      - (e) Warranty up to 10 years depending the weather condition and area
    - b. Architectural Class II
      - (a) Color powder coating confirming with AAMA2604 and 3 and 5 years Florida specifications
      - (b) Powder Coating finish shall be chosen from finish guide.
      - (c) Recommended for all buildings where optimum architectural, aesthetic, technical and economic performance is required.
      - (d) Warranty up to 15 years depending the weather condition and area
    - c. Architectural Class III
      - (a) Color powder coating confirming with AAMA2605 and 10 years Florida specifications
      - (b) Powder Coating finish shall be chosen from finish guide.
      - (c) Finishes: Matt
      - (d) Recommended for all prestigious and monumental buildings and in extreme environments.
      - (e) Warranty up to 20 years depending the weather condition and area
    - d. Acceptable Coatings Manufacturers:
      - (a) Akzonobel

#### 2.05 Door Fabrication

- A. Stiles and rails shall be tubular sections accurately joined, flush and hairline at corners with heavy concealed reinforcement brackets secured with machine bolts, with optional MIG weld. Exposed screws not permitted.
- B. Each door leaf equipped with an adjusting mechanism, located in the top rail near the lock stile.
- C. Prepare internal reinforcement for door hardware.
- D. Custom hardware templates and physical hardware must be submitted prior to any fabrication.

### Part 3 – Execution

3.01 Examinations

- A. Examine conditions and verify substrate conditions are acceptable for product installation.

3.02 Installation

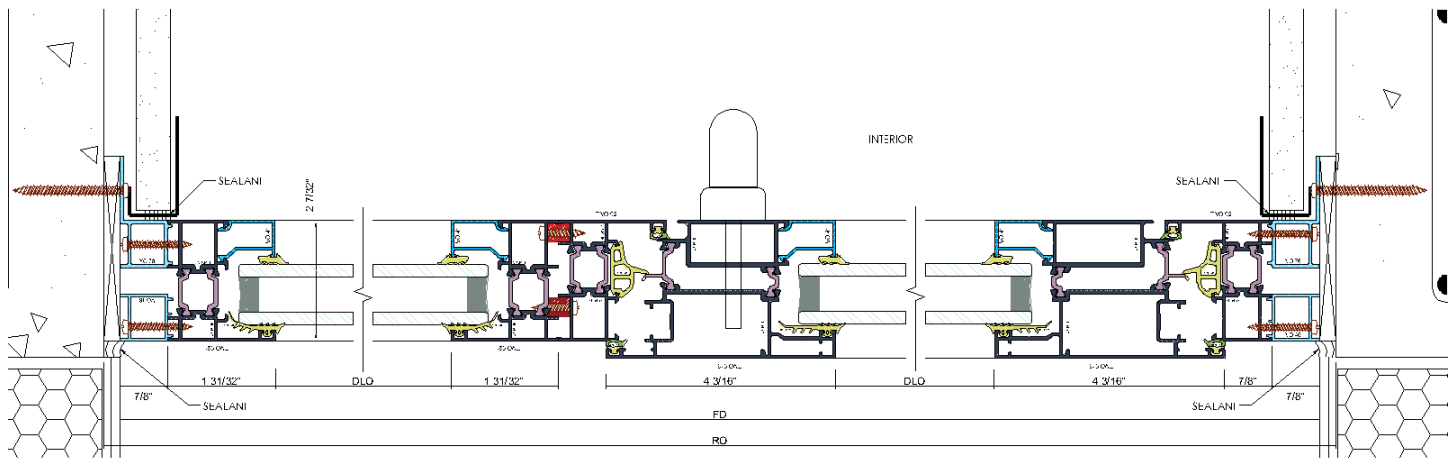
- A. Install in accordance with approved shop drawings and manufacturers installation instructions.

3.03 Field Quality Control

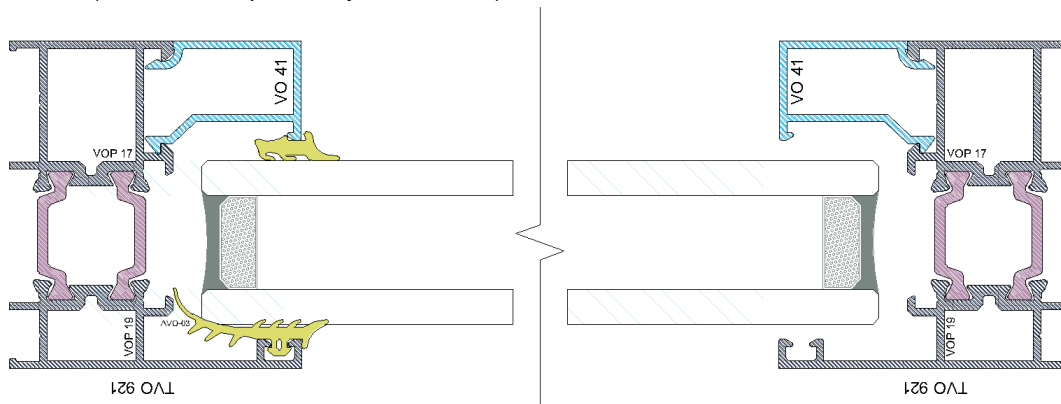
- A. Make all necessary final adjustments to attain normal operation of each door and its mechanical hardware.

**Part 4 – Sections**

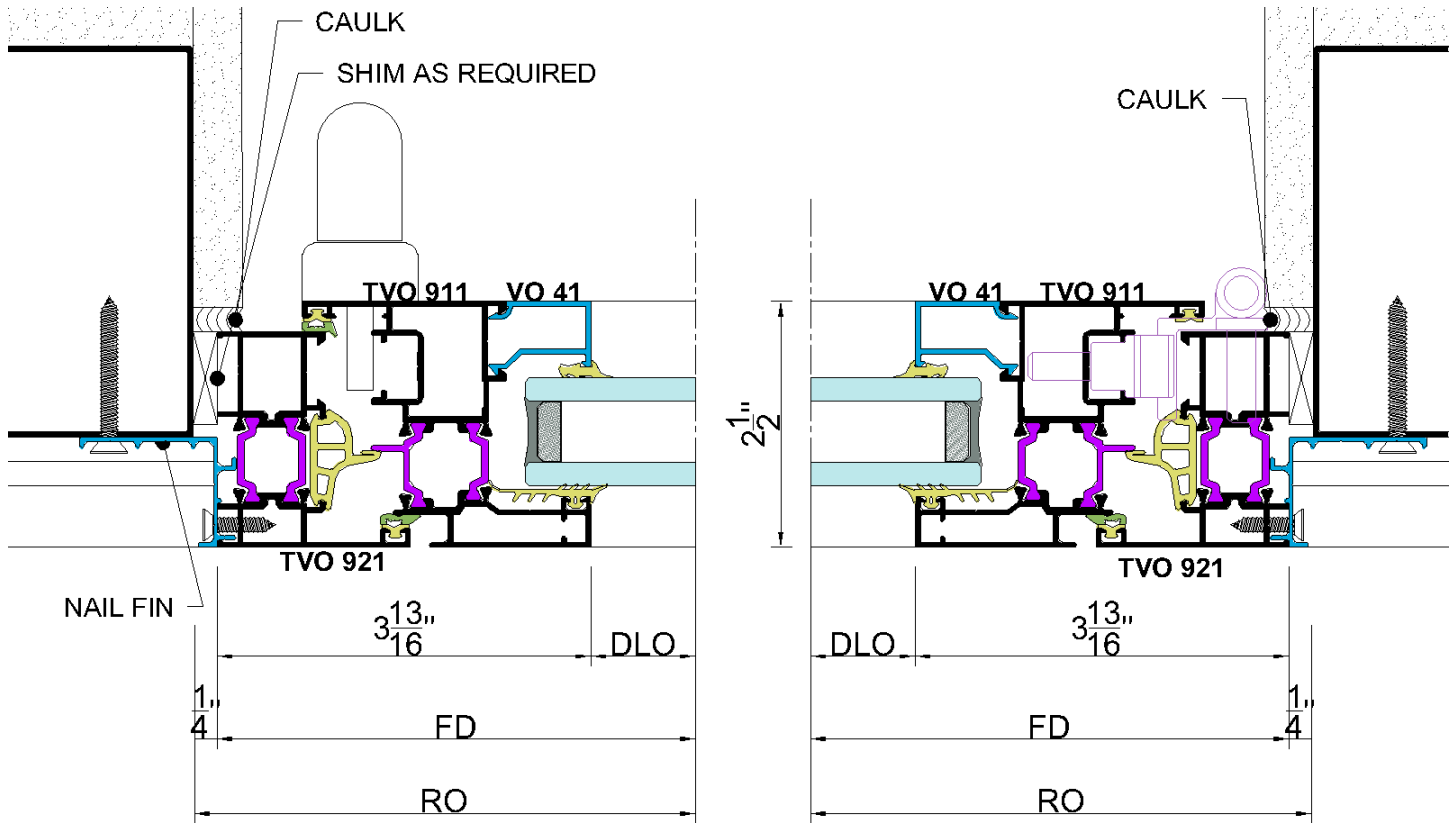
4.01 Fixed with outswing casement



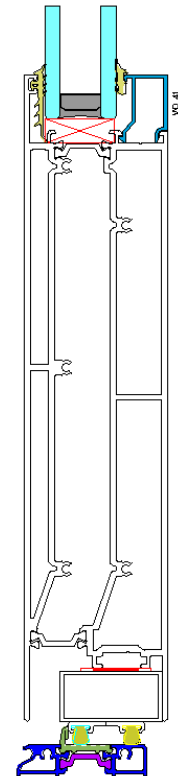
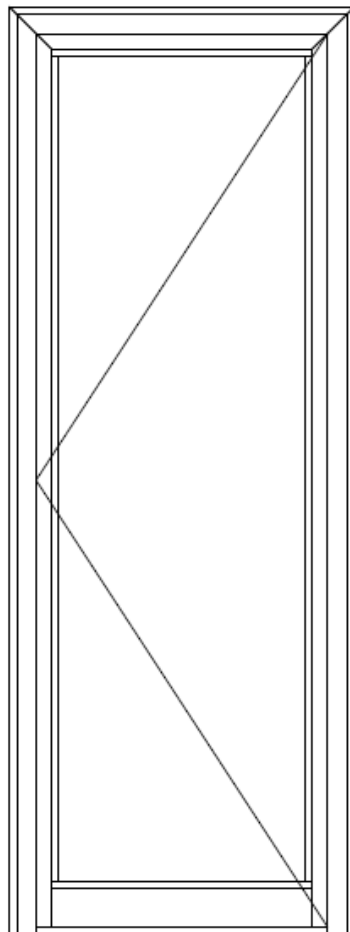
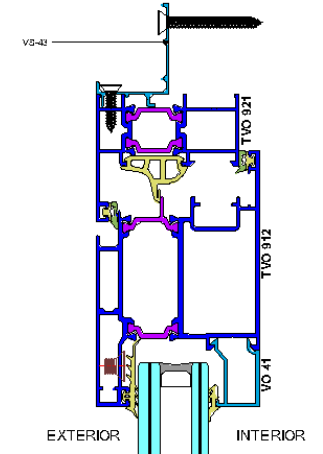
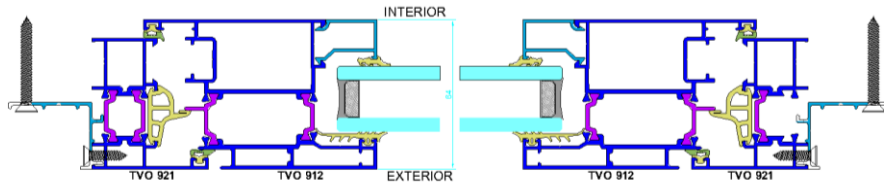
4.02 Fixed (neil fin or receptor is adjusted in case)



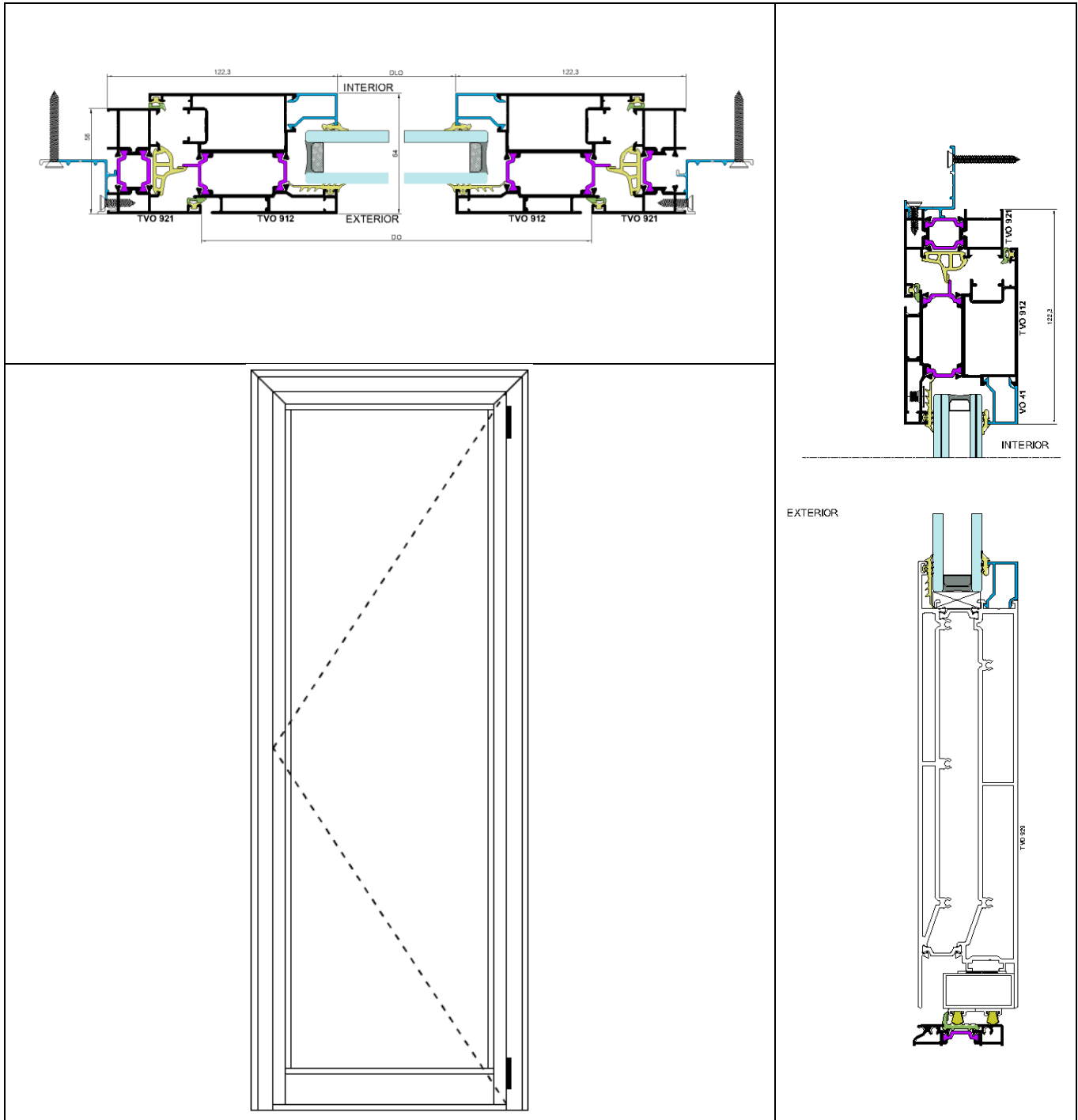
4.03 Inswing double action window



4.04 Inswing door



4.05 Outswing door with nail fin



END OF SECTION